

Mesothelioma Incidence- An Epidemiological Perspective

Waqas Amin, MD MS

Program Coordinator, NMVB

Senior Research Scientist

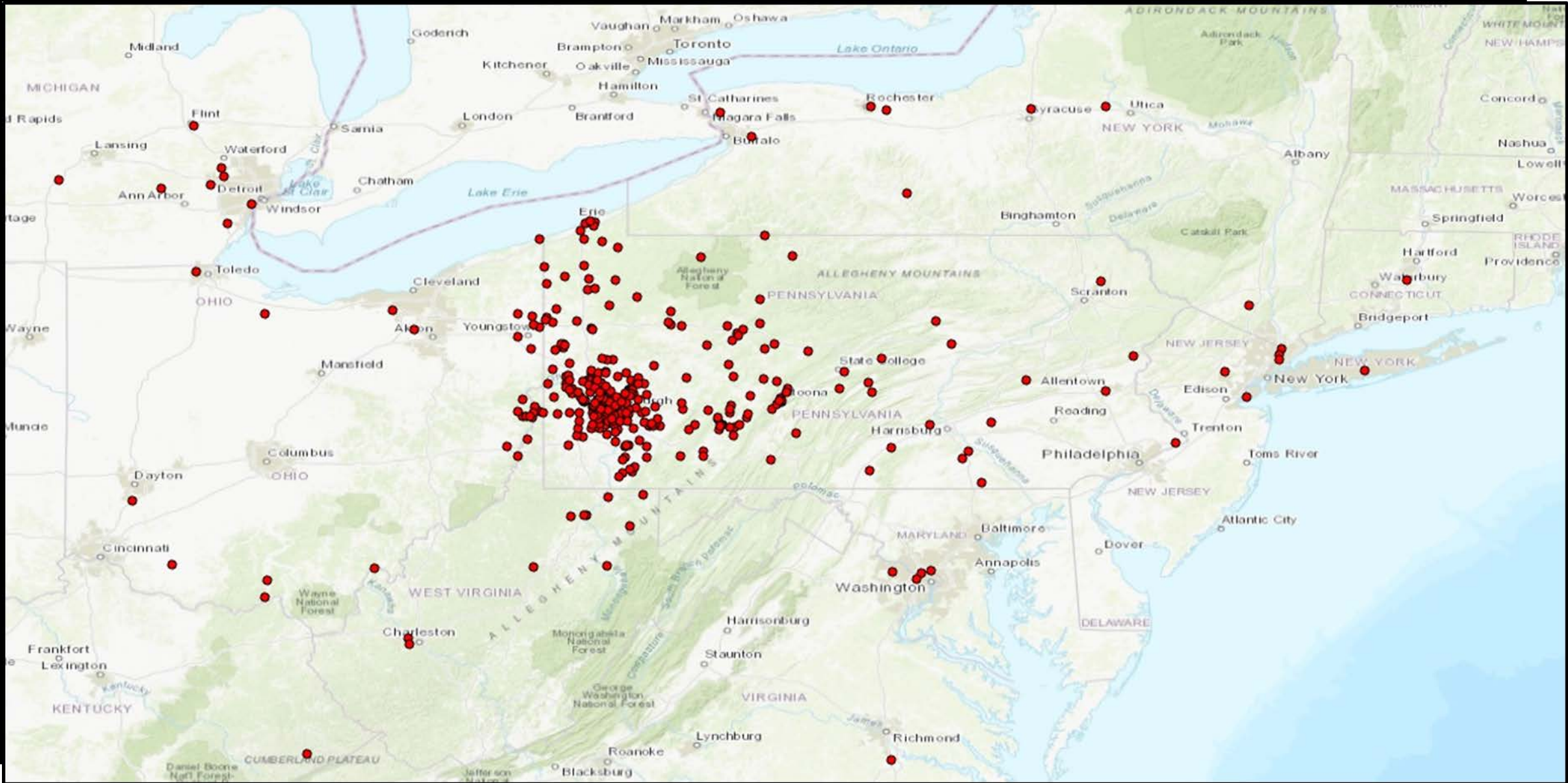
Department of Biomedical Informatics

University of Pittsburgh

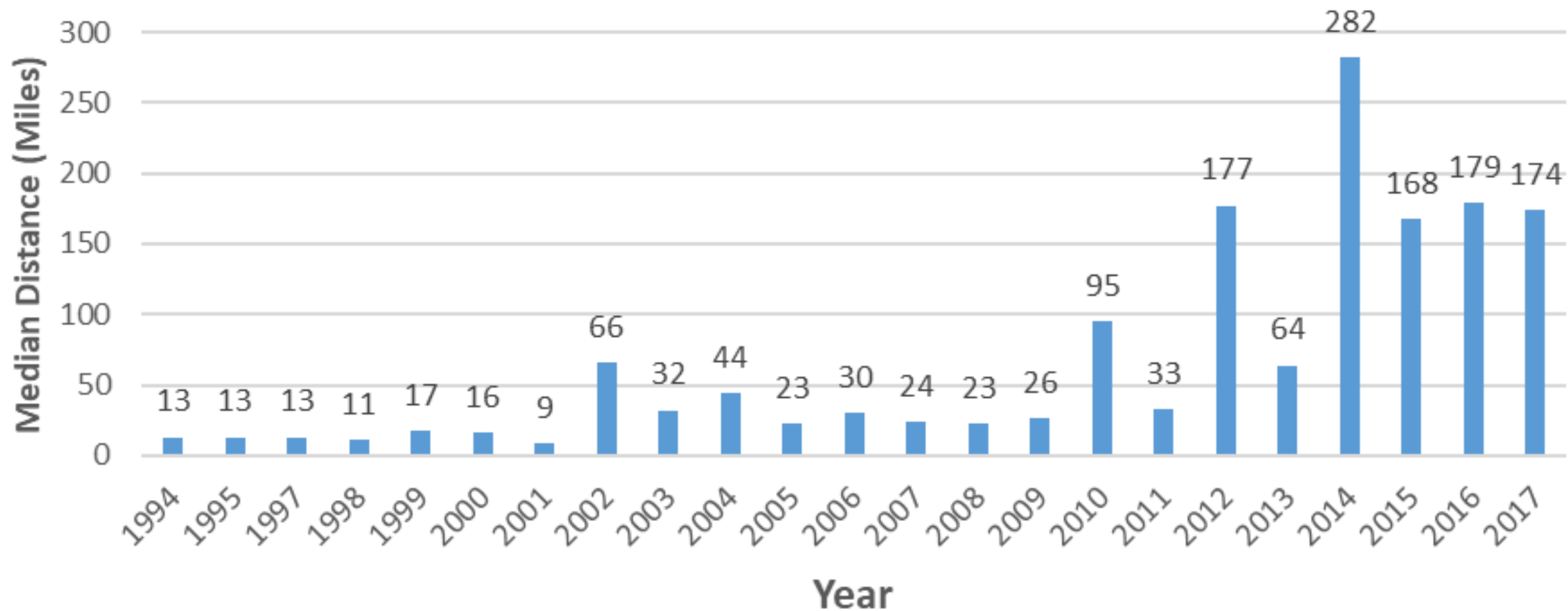
Phone: 412-648-9069

waa8@pitt.edu

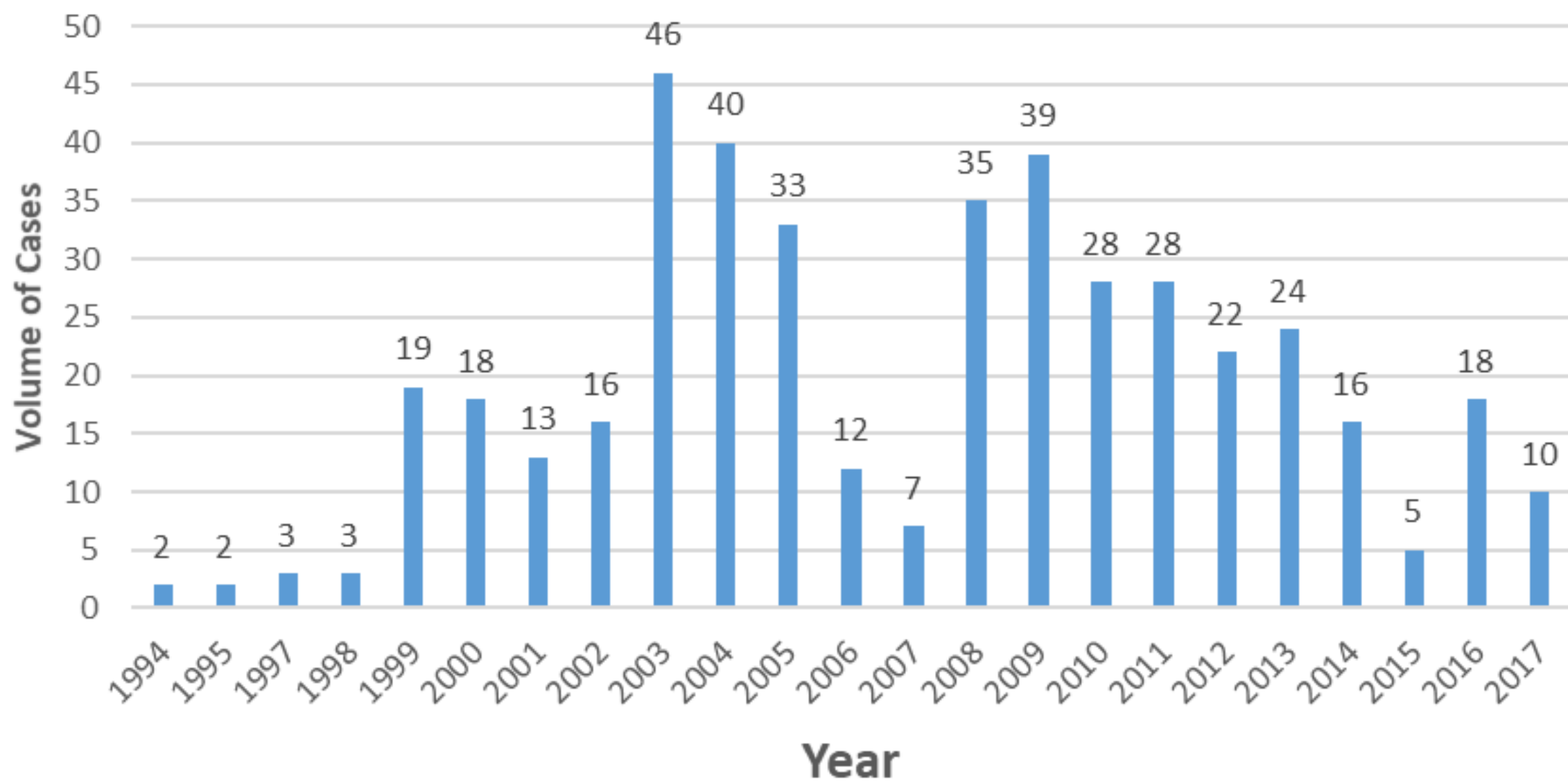
Geographic Map of UPMC Mesothelioma Collection:



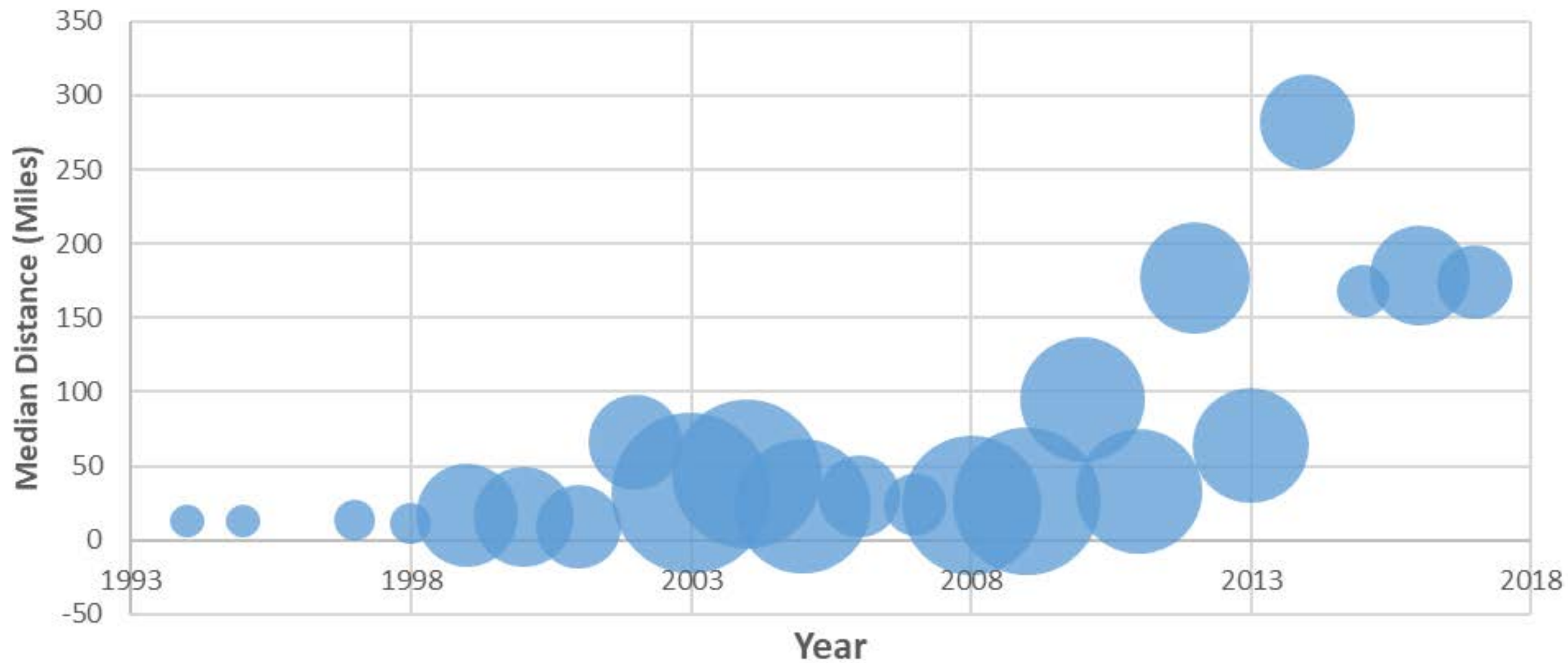
Median Distance from UPMC Presbyterian Hospital

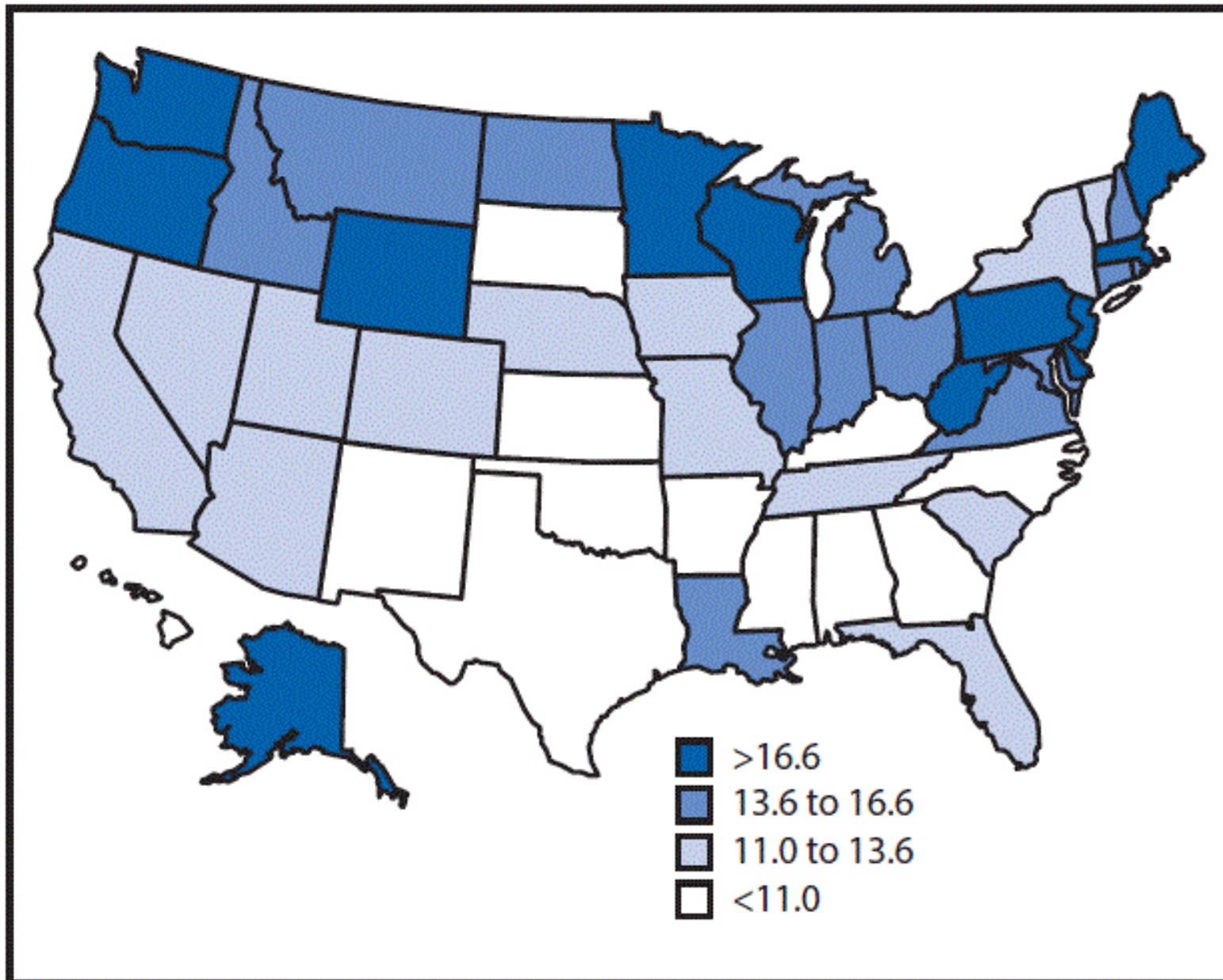


NMVB UPMC- Volume of Cases /Year



Median Distance vs Volume of UPMC Cases / Year





Malignant mesothelioma annualized age-adjusted death rate* per 1 million population,[†] by state – United States, 1999–2015

<https://www.cdc.gov/mmwr/volumes/66/wr/mm6608a3.htm>

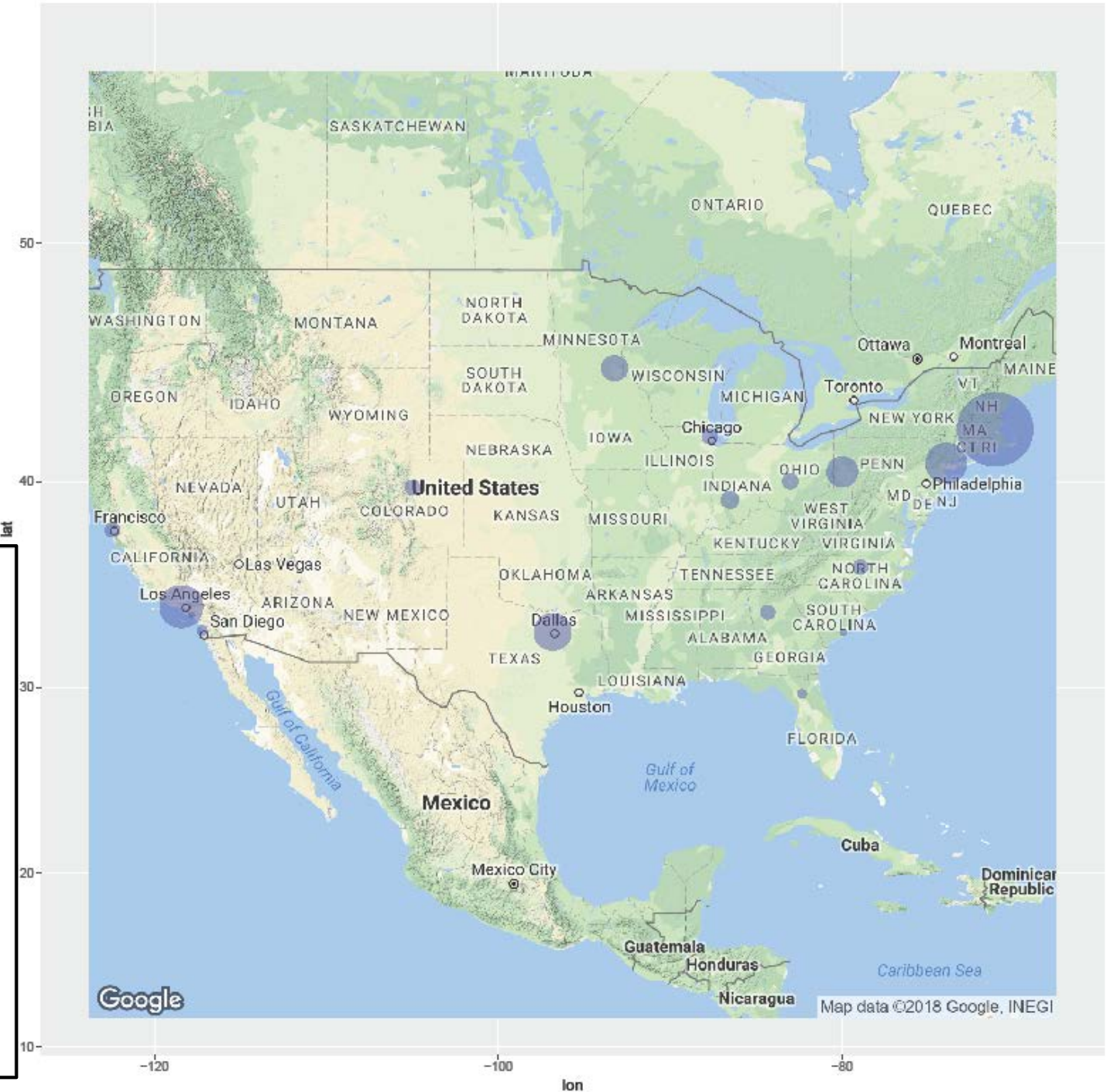
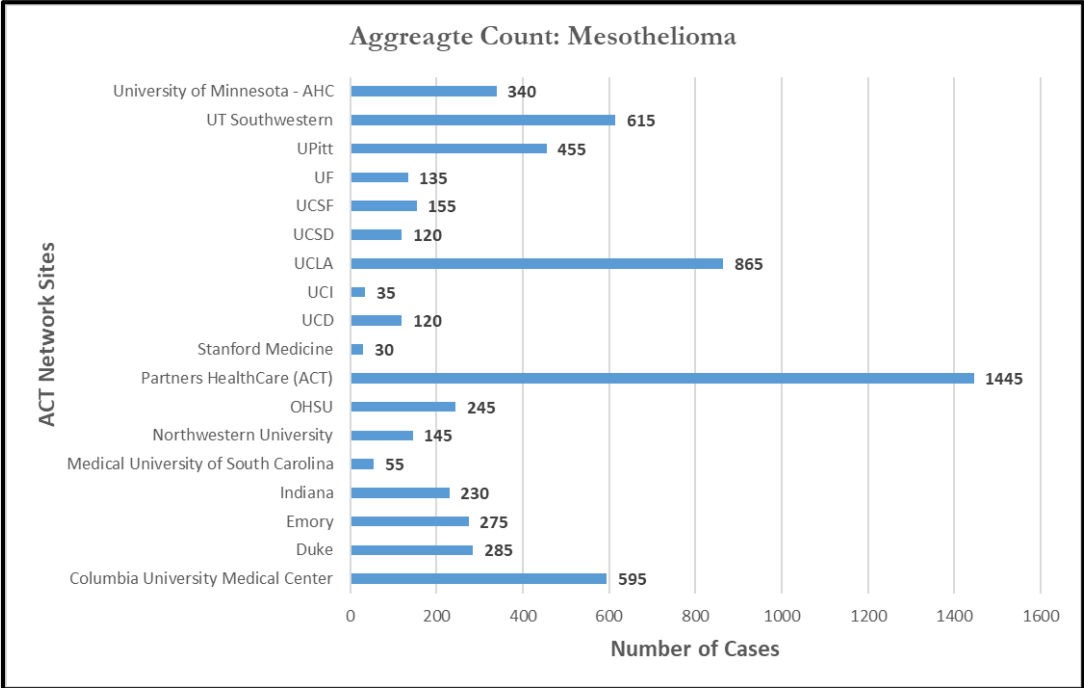
ACT (Accrual To Clinical Trial):

Mesothelioma Count:

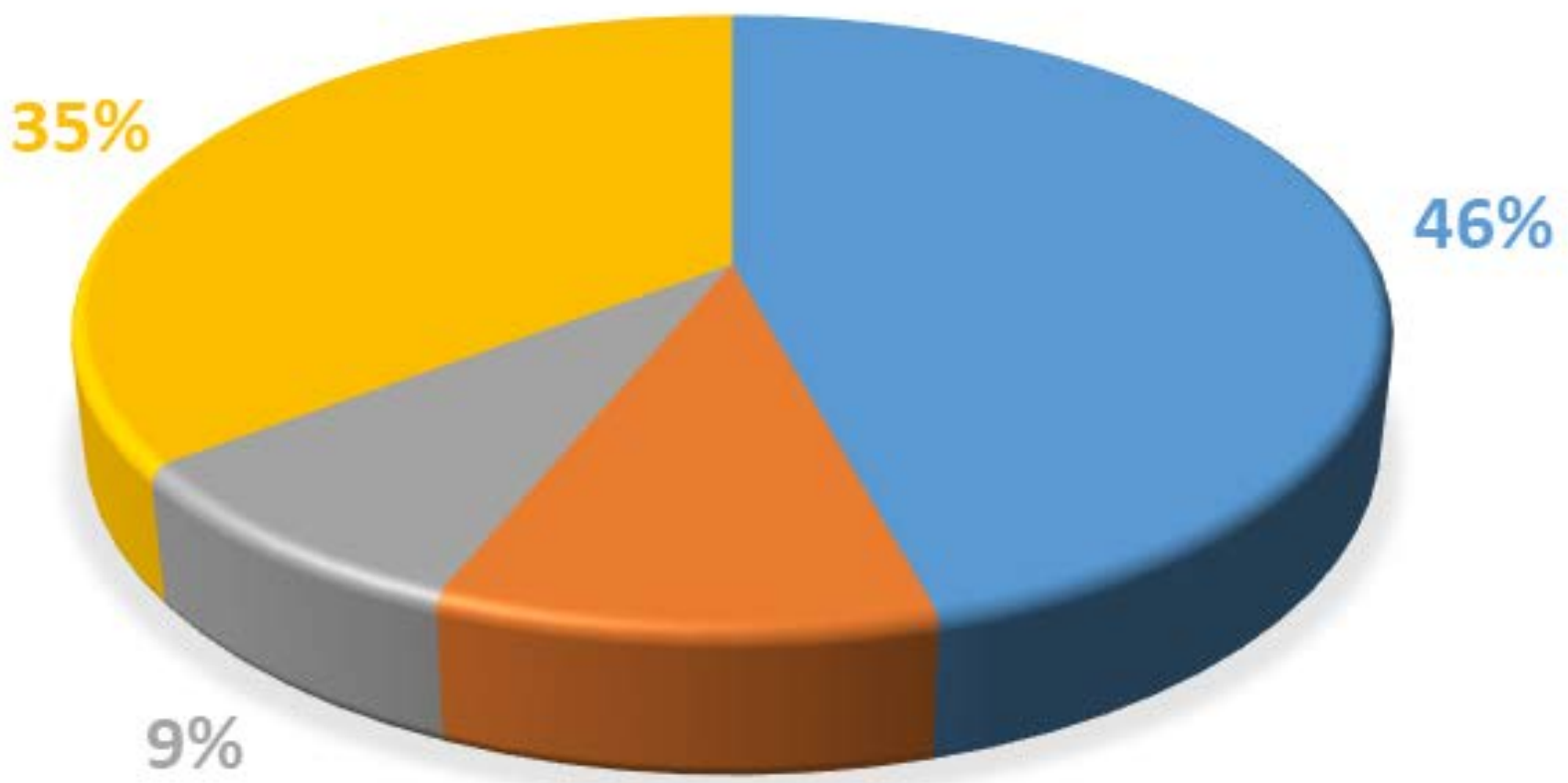
Nation-wide network of sites that share EHR (Electronic Health Record) to increase the participants accrual to clinical trials.

Funded by Clinical and Translational Science Awards (CTSA) program.

The ACT network is built on existing platforms (i2b2/SHRINE) to create a federated network with common standards, data terminology and shared resources.



HISTORY OF HARMFUL SUBSTANCE EXPOSURE



■ Asbestos

■ No Known Exposure

■ Other Exposure

■ Unknown

NMVB Health Assessment Questionnaire:

C. OCCUPATION

16. Are you currently? **(Please check one)**

- Employed
- Unemployed
- Retired
- Disabled
- Homemaker

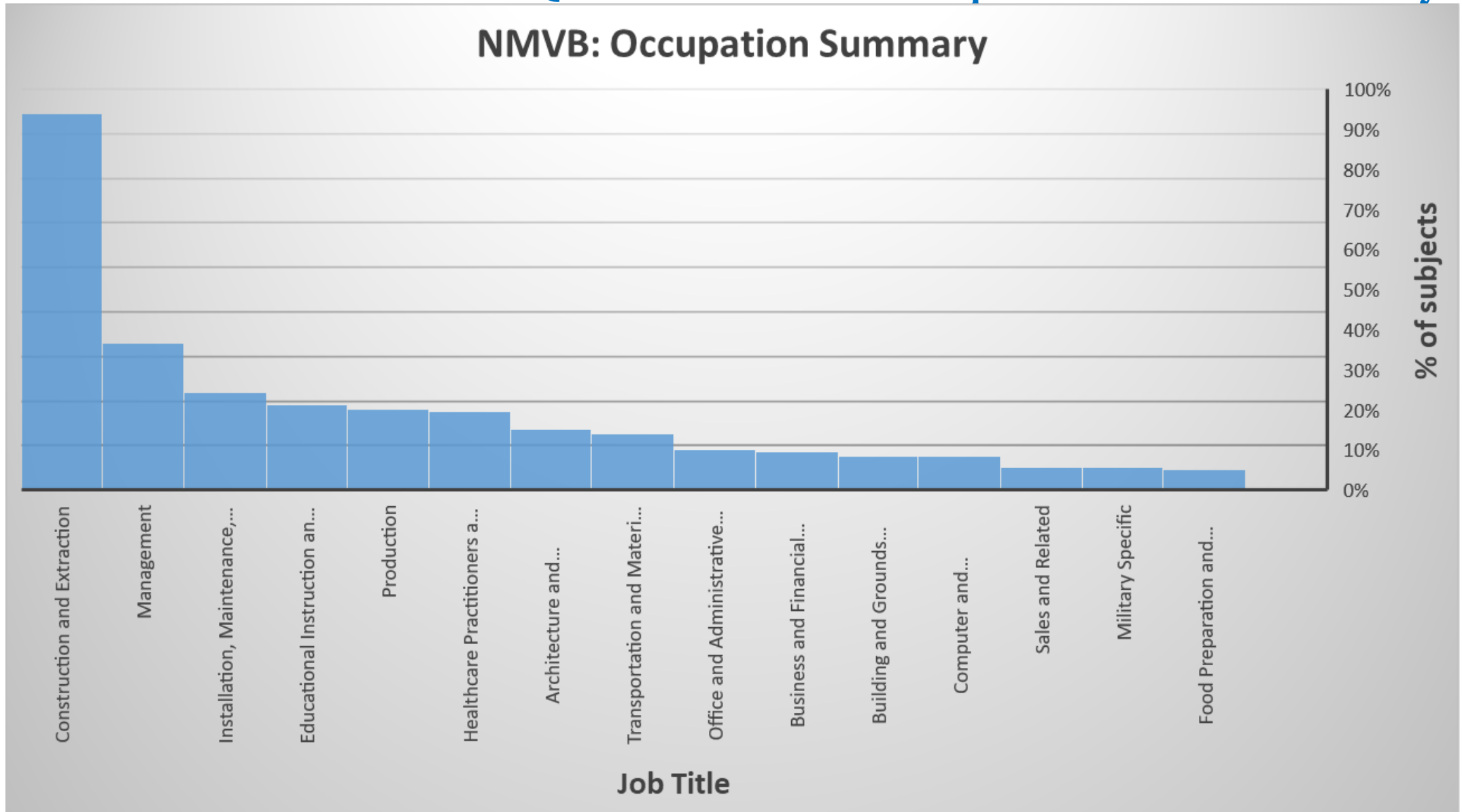
- Student
- Others
please specify: _____

a) What was the last year you were employed? _____

b) STARTING WITH YOUR MOST RECENT JOB, AND WORKING BACKWARDS

Job	2. What kind of business, industry, organization (IS, WAS) that?	3. What (IS/WAS) your job title?	4. What (ARE/WERE) your duties at this job?	5. Dates of Job
A.				
B.				
C.				
D.				
E.				

NMVB Health Assessment Questionnaire: Occupation Data Summary



Bureau of Labor Statistics, Standard Occupational Classification (<https://www.bls.gov/soc/>)

Thank you